



## range introduction

Premier is a modern integrated trunking system which provides the means to distribute power, data and telecom services around buildings.

A wide range of snap fit mouldings, including reducers, make it easy to run continuous lengths of trunking as cable feeders and, where required, to provide dado trunking with the necessary power, data and telecom outlets. The MK Aspect and Logic Plus accessory ranges complement the style and finish of Premier Trunking.

## feature benefits

**Simple, clean lines**

Stylish and unobtrusive finish

**Wide range of integrated components**

Maximises versatility in application

**Clip-on covers provide continuous access for wiring modifications**

Easy to assemble and install

**Data corners provide 32mm radius compatible with Cat5e data cables**

Enables data cables to perform to their maximum capabilities

**Tapered joints provide complete protection at junctions masking cut ends**

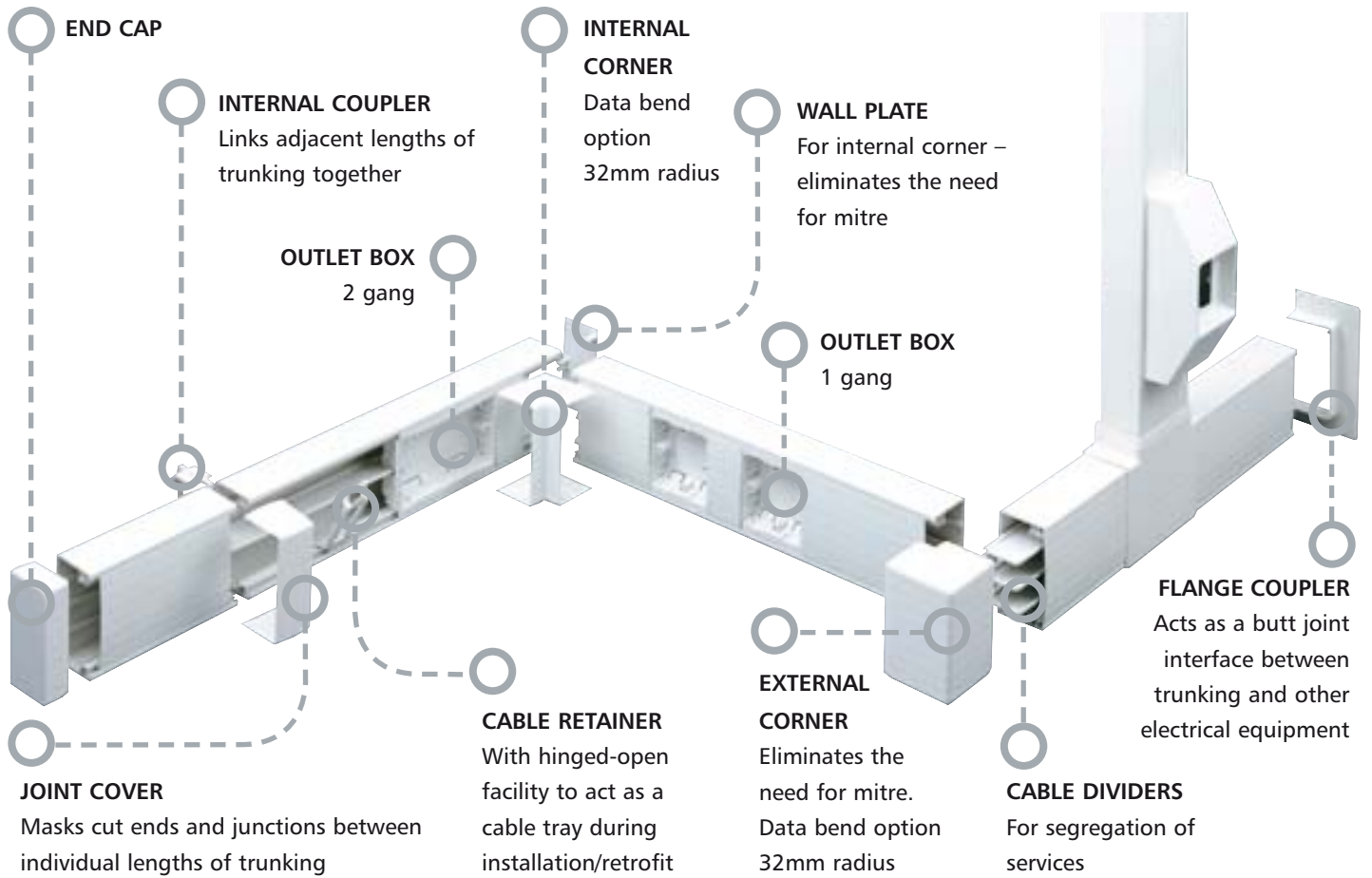
Uniform and neat finish to any installation

**Made from 100% PVCu**

Premier is both robust and easily workable on site

technical hotline +44 (0)1268 563720

perimeter and distribution | cable management



Components are available in a choice of over 180 RAL paint colours. Specify your choice when ordering.



Reducers are used to connect different sizes of trunking.



Adaptors provide integration with Ega Mini and Communication Trunking for local distribution.



Moulded flat cross available for all distribution trunking.



## Trunking

MATERIAL: PVCu  
COLOUR: White

3 METRE  
LENGTHS

2 METRE  
LENGTHS

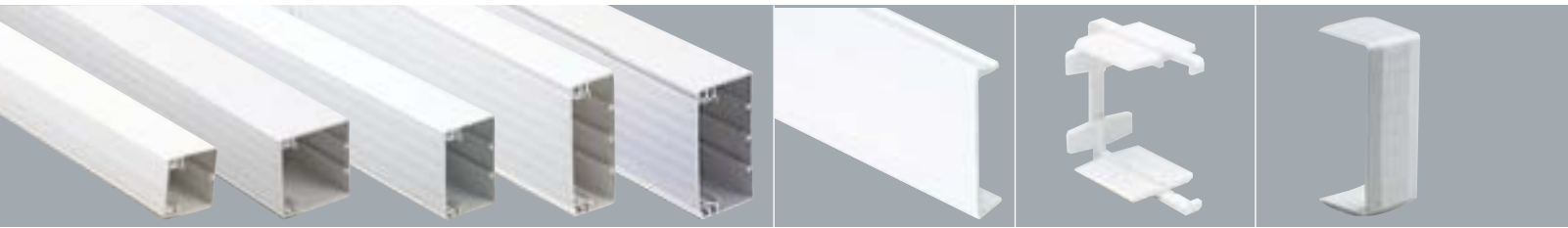
SPARE  
TRUNKING LID  
3 METRE  
LENGTHS

Internal  
Coupler

MOULDED

Joint  
Cover

MOULDED



50 x 50mm	<b>NCT/5050</b>	<b>12m</b>	<b>NCT/5050 D1*</b>	<b>12m</b>	<b>NCT/50LID</b>	<b>12m</b>	<b>NCI/5050</b>	<b>5</b>	<b>NJC/5050</b>	<b>10</b>
75 x 50mm	<b>NCT/7550</b>	<b>12m</b>	<b>NCT/7550 D1*</b>	<b>12m</b>	<b>NCT/50LID</b>	<b>12m</b>	<b>NCI/7550</b>	<b>5</b>	<b>NJC/7550</b>	<b>10</b>
75 x 75mm	<b>NCT/7575</b>	<b>12m</b>	<b>NCT/7575 D1*</b>	<b>8m</b>	<b>NCT/75LID</b>	<b>12m</b>	<b>NCI/7575</b>	<b>5</b>	<b>NJC/7575</b>	<b>10</b>
100 x 40mm	<b>NCT/1040</b>	<b>12m</b>	<b>NCT/1040 D1*</b>	<b>8m</b>	<b>NCT/100LID</b>	<b>12m</b>	<b>NCI/1040</b>	<b>5</b>	<b>NJC/1040</b>	<b>5</b>
100 x 50mm	<b>NCT/1050</b>	<b>12m</b>	<b>NCT/1050 D1*</b>	<b>8m</b>	<b>NCT/100LID</b>	<b>12m</b>	<b>NCI/1050</b>	<b>5</b>	<b>NJC/1050</b>	<b>5</b>
100 x 100mm	<b>NCT/1010</b>	<b>12m</b>	<b>NCT/1010 D1*</b>	<b>8m</b>	<b>NCT/100LID</b>	<b>12m</b>	<b>NCI/1010</b>	<b>5</b>	<b>NJC/1010</b>	<b>5</b>

\*2 metre lengths are available  
for NON UK markets.

External  
Corner

MOULDED

WITH  
DATA CORNER  
MOULDED

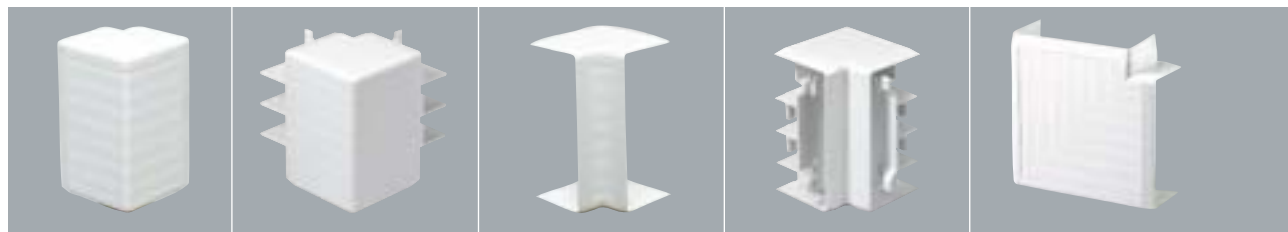
Internal  
Corner

MOULDED

WITH  
DATA CORNER  
MOULDED

## Flat Angle

MOULDED



50 x 50mm	<b>NAE/5050</b>	<b>2</b>		<b>NAI/5050</b>	<b>2</b>		<b>NAF/5050</b>	<b>2</b>
75 x 50mm	<b>NAE/7550</b>	<b>2</b>		<b>NAI/7550</b>	<b>2</b>		<b>NAF/7550</b>	<b>2</b>
75 x 75mm	<b>NAE/7575</b>	<b>2</b>		<b>NAI/7575</b>	<b>2</b>		<b>NAF/7575</b>	<b>2</b>
100 x 40mm	<b>NAE/1040</b>	<b>2</b>		<b>NAI/1040</b>	<b>2</b>		<b>NAF/1040</b>	<b>2</b>
100 x 50mm	<b>NAE/1050</b>	<b>2</b>	<b>NDAE/1050</b>	<b>2</b>	<b>NAI/1050</b>	<b>2</b>	<b>NDAI/1050</b>	<b>2</b>
100 x 50mm	<b>NFAE/1050*</b>	<b>2</b>		<b>NFAI/1050*</b>	<b>2</b>		<b>NFAF/1050*</b>	<b>2</b>
100 x 100mm	<b>NAE/1010*</b>	<b>1</b>		<b>NAI/1010*</b>	<b>1</b>		<b>NAF/1010*</b>	<b>1</b>

\*Fabricated

Data corner provides  
32mm (1 1/4" or 1.25")  
radius compatible with  
Cat 5e data cables

\*Fabricated

Data corner provides  
32mm (1 1/4" or 1.25")  
radius compatible with  
Cat 5e data cables

\*Fabricated

technical hotline +44 (0)1268 563720

perimeter and distribution | cable management

### Cable Retainer

MOULDED

### Cable Divider

3 METRE

### End Cap

UNIVERSAL  
FOR USE AT  
EITHER END  
MOULDED

### Underbox Divider

1 GANG                      2 GANG  
USED TO MAINTAIN CABLE SEGREGATION  
BEHIND SOCKET OUTLETS



NBP/50	10	NVS/50	36m	NEP/5050	5		
NBP/75	10	NVS/50	36m	NEP/7550	5		
NBP/75	10	NVS/75	36m	NEP/7575	5		
NBP/100	10	NVS/40	36m	NEP/1040	5	NUB/401	10
NBP/100	10	NVS/50	36m	NEP/1050	5	NUB/501	10
NBP/100	10	NVS/100	36m	NEP/1010	5	NUB/1001	10
						NUB/402	10
						NUB/502	10
						NUB/1002	10

### Flat Tee

WITH  
DATA CORNER  
MOULDED

MOULDED

### Double Set

FABRICATED

### Internal Tee

FABRICATED

### External Tee

FABRICATED

WITH  
DATA CORNER  
MOULDED



	NTF/5050	2		NMD/5050	2	NTI/5050	1	NTE/5050	1
	NTF/7550	2				NTI/7550	1	NTE/7550	1
	NTF/7575	2				NTI/7575	1	NTE/7575	1
	NTF/1040	2				NTI/1040	1	NTE/1040	1
NDAF/1050	2	NTF/1050	2	NDTF/1050	2	NTI/1050	1	NTE/1050	1
	NFTF/1050*	2							
	NFTF/1010*	1				NTI/1010	1	NTE/1010	1

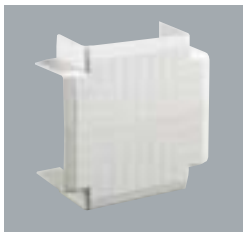
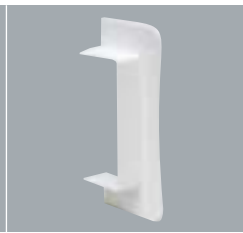
Data corner provides 32mm (1 1/4" or 1.25") radius compatible with Cat 5e data cables

\*Fabricated

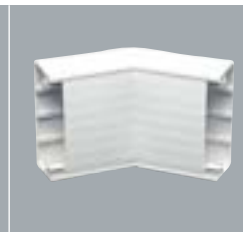
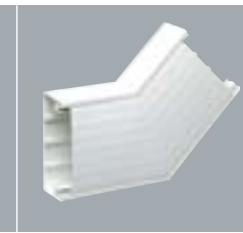
Data corner provides 32mm (1 1/4" or 1.25") radius compatible with Cat 5e data cables

Flat  
Cross

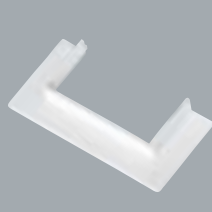
MOULDED

Flange  
Coupler

## Angles

INTERNAL  
135°  
FABRICATEDEXTERNAL  
135°  
FABRICATEDFLAT  
135°  
FABRICATED

50 x 50mm	<b>NCU/5050</b>	<b>1</b>	<b>NFC/5050</b>	<b>1</b>	<b>NMI/5050</b>	<b>1</b>	<b>NMO/5050</b>	<b>1</b>	<b>NMT/5050</b>	<b>1</b>
75 x 50mm	<b>NCU/7550</b>	<b>1</b>	<b>NFC/7550</b>	<b>1</b>	<b>NMI/7550</b>	<b>1</b>	<b>NMO/7550</b>	<b>1</b>	<b>NMT/7550</b>	<b>1</b>
75 x 75mm	<b>NCU/7575</b>	<b>1</b>	<b>NFC/7575</b>	<b>1</b>	<b>NMI/7575</b>	<b>1</b>	<b>NMO/7575</b>	<b>1</b>	<b>NMT/7575</b>	<b>1</b>
100 x 40mm	<b>NCU/1040</b>	<b>1</b>	<b>NFC/1040</b>	<b>1</b>	<b>NMI/1040</b>	<b>1</b>	<b>NMO/1040</b>	<b>1</b>	<b>NMT/1040</b>	<b>1</b>
100 x 50mm	<b>NCU/1050</b>	<b>1</b>	<b>NFC/1050</b>	<b>1</b>	<b>NMI/1050</b>	<b>1</b>	<b>NMO/1050</b>	<b>1</b>	<b>NMT/1050</b>	<b>1</b>
100 x 100mm	<b>NCU/1010</b>	<b>1</b>	<b>NFC/1010</b>	<b>1</b>	<b>NMI/1010</b>	<b>1</b>	<b>NMO/1010</b>	<b>1</b>	<b>NMT/1010</b>	<b>1</b>

MCB/RCD  
HousingsMini  
Trunking  
AdaptorFOR YEA AND  
CMA ADAPTORSPartition  
Wall CoverFOR TRUNKING  
100MM X 40MMAccessory  
BoxesONE GANG  
25 & 35MM  
DEEP FOR  
100MM WIDE  
TRUNKINGTWO GANG  
25 & 35MM  
DEEP FOR  
100MM WIDE  
TRUNKING**NMH/100****1****VTS/KMH/1 WHI****1****NYT/100****10****NWC/1040****5****VTS/6025 WHI****25****VTS/7025 WHI****10****VTS/6035 WHI****25****VTS/7035 WHI****10**VTS/KMH includes cover.  
Accessory not provided35mm deep boxes are only  
for use in 100 x 50mm and  
100 x 100mm trunking35mm deep boxes are only  
for use in 100 x 50mm and  
100 x 100mm trunking

technical hotline +44 (0)1268 563720

perimeter and distribution | cable management

## Wall Plates

FOR INTERNAL  
CORNERS  
MOULDED

## Reducers

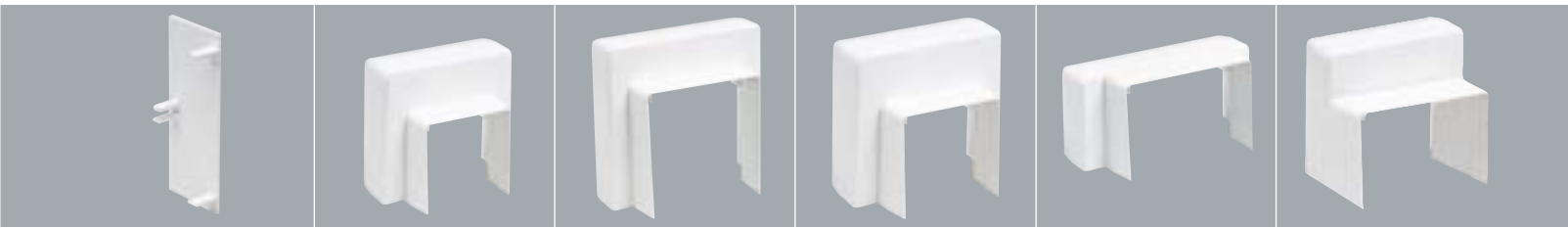
50 X 50MM  
FABRICATED

75 X 50MM  
FABRICATED

75 X 75MM  
FABRICATED

100 X 40MM  
FABRICATED

100 X 50MM  
FABRICATED



<b>NWP/5050</b>	<b>5</b>										
<b>NWP/7550</b>	<b>5</b>	<b>NTR/21</b>	<b>1</b>								
<b>NWP/7575</b>	<b>5</b>	<b>NTR/31</b>	<b>1</b>	<b>NTR/32</b>	<b>1</b>						
<b>NWP/1040</b>	<b>5</b>										
<b>NWP/1050</b>	<b>5</b>	<b>NTR/41</b>	<b>1</b>	<b>NTR/42</b>	<b>1</b>		<b>NTR/45</b>	<b>1</b>			
<b>NWP/1010</b>	<b>5</b>	<b>NTR/61</b>	<b>1</b>	<b>NTR/62</b>	<b>1</b>	<b>NTR/63</b>	<b>1</b>	<b>NTR/65</b>	<b>1</b>	<b>NTR/64</b>	<b>1</b>

## Mounting Frames

THREE GANG  
28MM DEEP FOR  
100MM WIDE  
TRUNKING

ONE GANG  
25 & 35MM  
DEEP  
FLUSH PILLARS  
(NON UK)

## Adaptor Plates

45 X 45MM  
APERTURE  
(NON UK)

## Accessory Spacer



<b>VTS/8028 WHI</b>	<b>5</b>	<b>NCT/1G25 WHI</b>	<b>25</b>	<b>VTS/6000 WHI</b>	<b>10</b>	<b>VTS/4545 WHI</b>	<b>10</b>	<b>VTS/35B WHI</b>	<b>10</b>	<b>NSP/100</b>	<b>10</b>
<b>K3716</b>	<b>100</b>	25MM DEEP		1 GANG		FLAT		ADAPTOR BOX BASE		ACCESSORY SPACER	
BOX EARTH TERMINAL		<b>NCT/1G35 WHI</b>	<b>25</b>	ACCESSORY MOUNTING		<b>VTS/4545R WHI</b>	<b>10</b>	FOR 100MM WIDE		TRUNKING	
		35MM DEEP		FRAME		RAISED					
				<b>VTS/7000 WHI</b>	<b>5</b>						
				2 GANG							
				ACCESSORY MOUNTING							
				FRAME							